

Solid Waste Management Division



SOUTH WAKE LANDFILL

Citizens Committee Meeting

April 28, 2021

Meeting held virtually



@wakegov



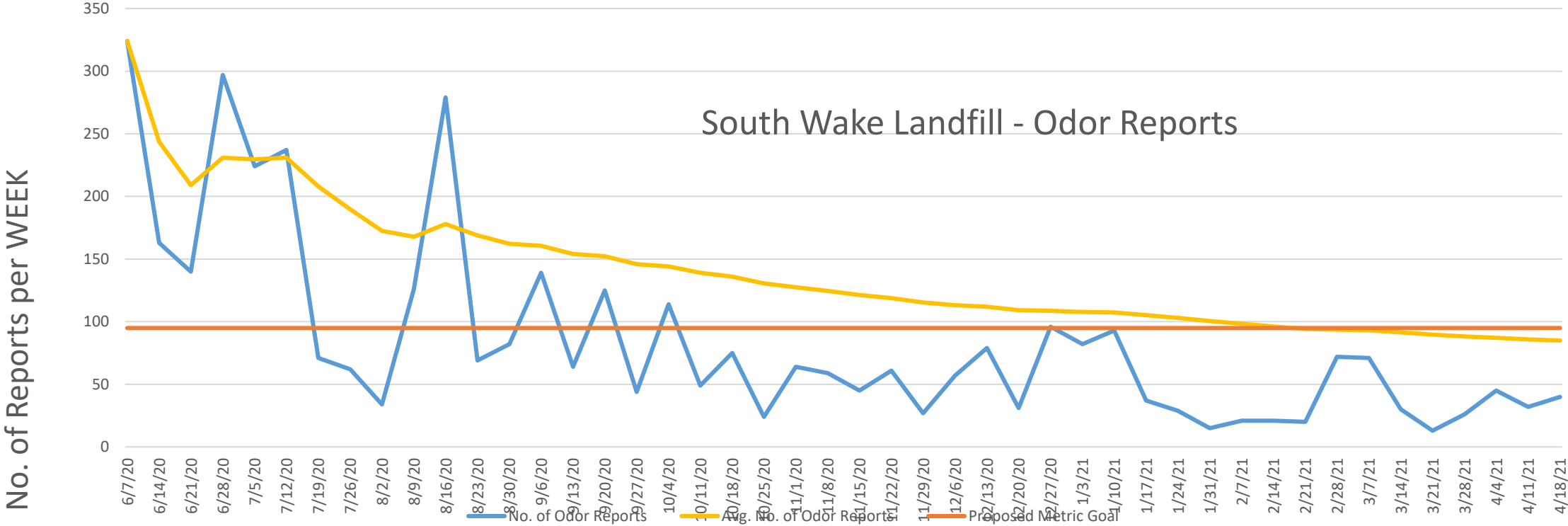
wakegov.com

Topics/Agenda

- Introductions
- Update of Odor Control Efforts including Odor Management & Control Plan Schedule
- Review of Communications Report and Next Steps
- Outreach & Education
- Other items

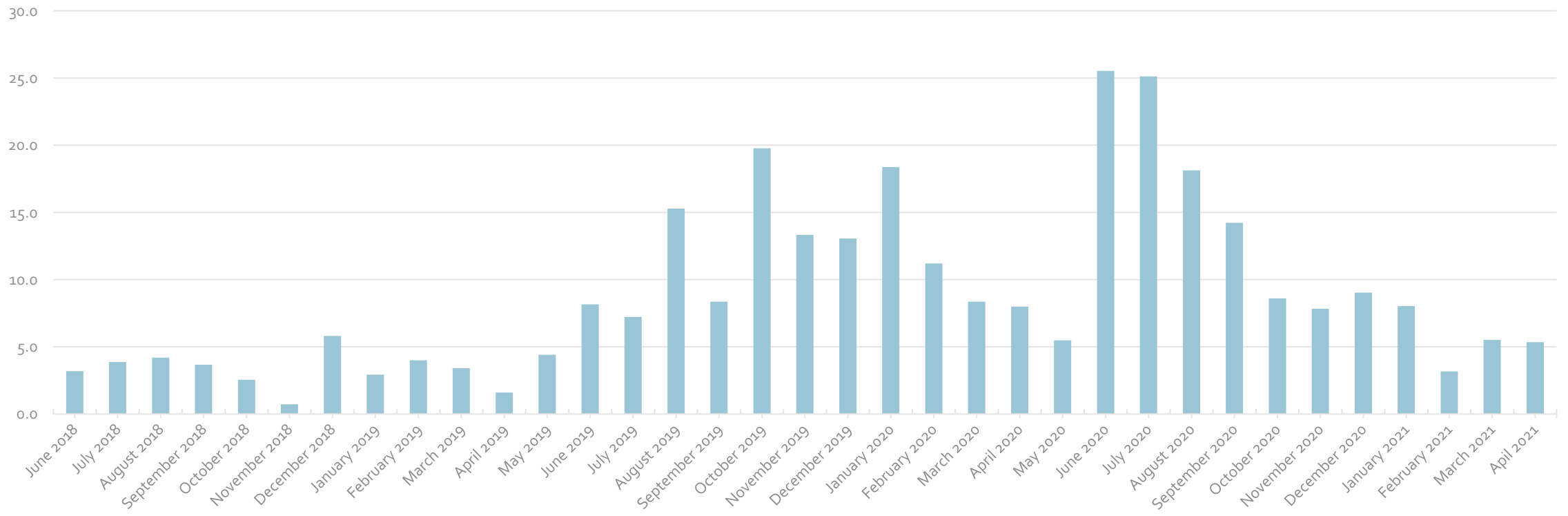
Update of Odor Control Efforts including Odor Management & Control Plan Schedule

Ongoing Odor Reduction Efforts



Odor Reports Since June 2018

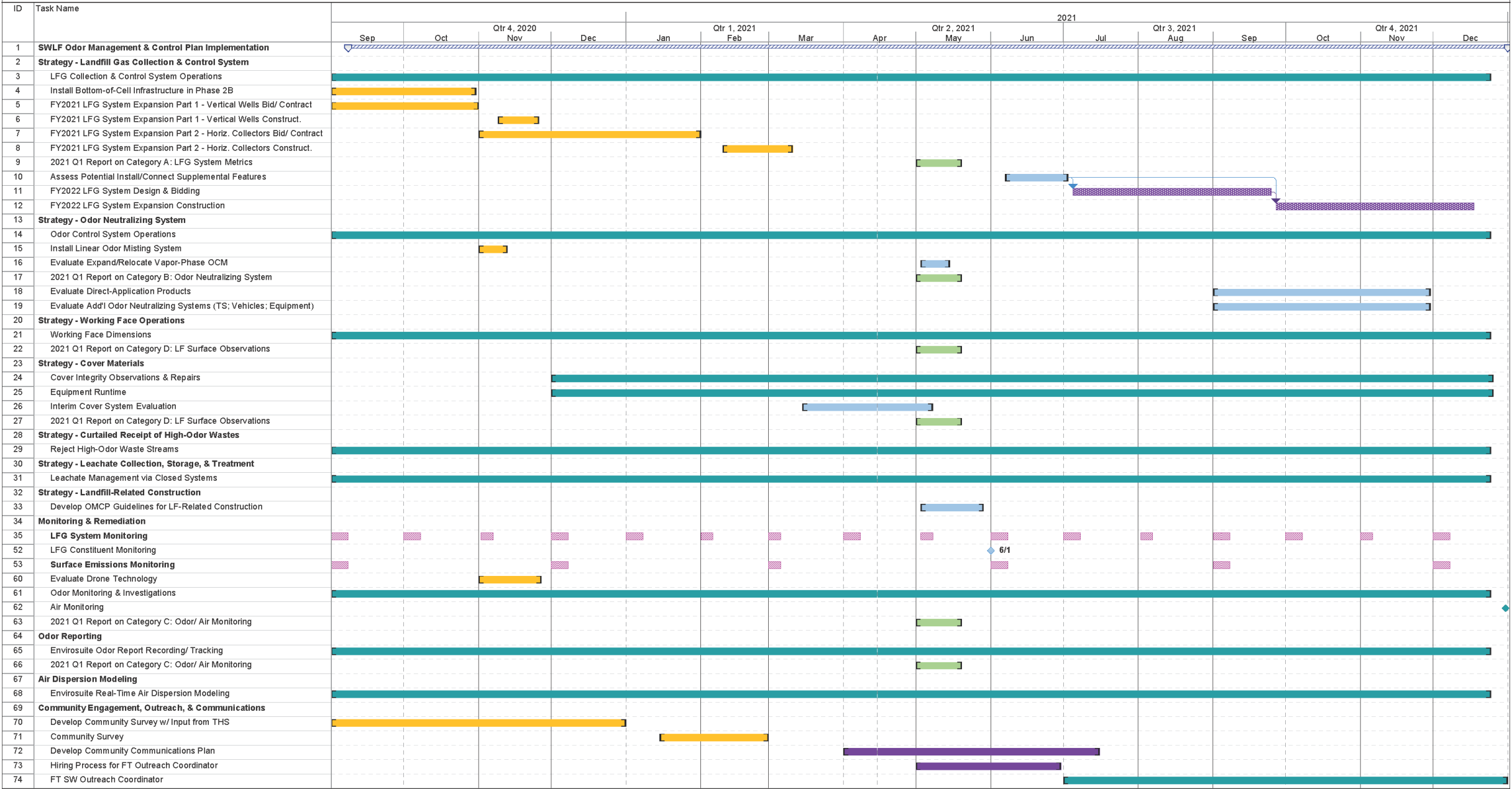
South Wake Landfill
Average Odor Complaints per Day
JUNE 2018 - MAY 2021



Factors Related to Odor Reporting Improvements

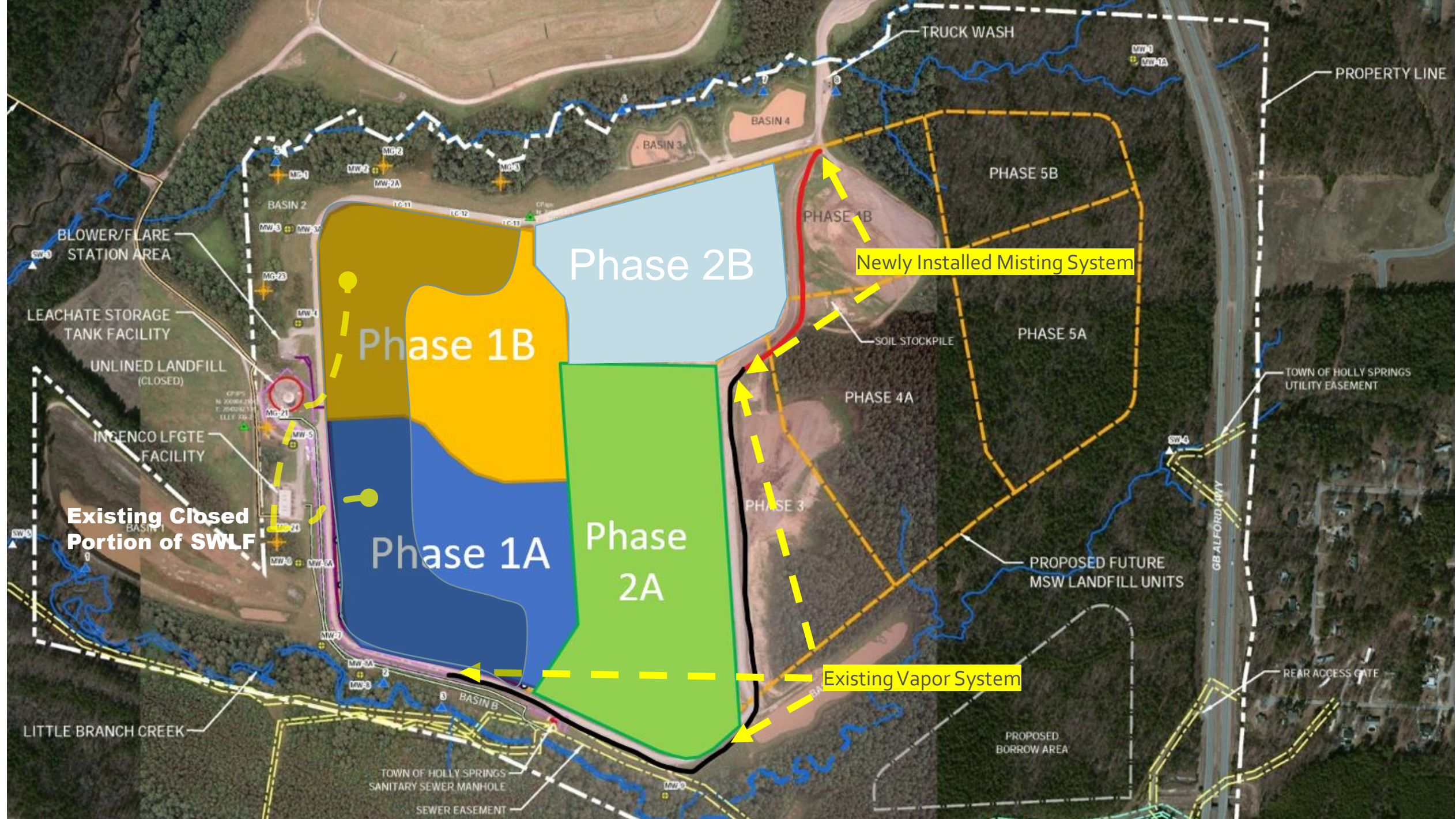
- Conversion to daily soil/dirt cover (elimination of posishell)
- Increased the technical expertise at the SWLF by GFL hiring a new superintendent.
- GFL invested \$2+ million dollars in the acquisition of heavy equipment specifically for the SWLF for moving the vast amounts of dirt required to primarily cover daily with dirt.
- Wake County invested \$650,000 dollars to add additional landfill gas collection components

Odor Management & Control Implementation Schedule



OMCP Schedule

	<u>Commence Date</u>	<u>Complete By</u>
Incorporate Bottom-of-Cell Infrastructure in Phase 2B	10/1/20	Completed
LFG System Expansion (Part I – Vertical LFG Extraction Wells)	11/10/20	Completed
LFG System Expansion (Part II – Horizontal Collectors, etc.)	2/15/21	Completed
Contract for Outreach Coordinator Efforts	10/15/20	6/30/21
Hire FTE for Outreach Coordination Efforts	Initiated	June 2021
Expand SEM into Phase 2A	11/1/20	Completed
Piloting of Odor Masking/Neutralizing Products	10/1/20	Completed
Evaluate Use of Drone Technology	11/1/20	Still Evaluating
Evaluation of Interim Covers	3/1/21	5/31/21
Monthly/Bi-Monthly Discussions between HS & Wake	3/16/21	Ongoing

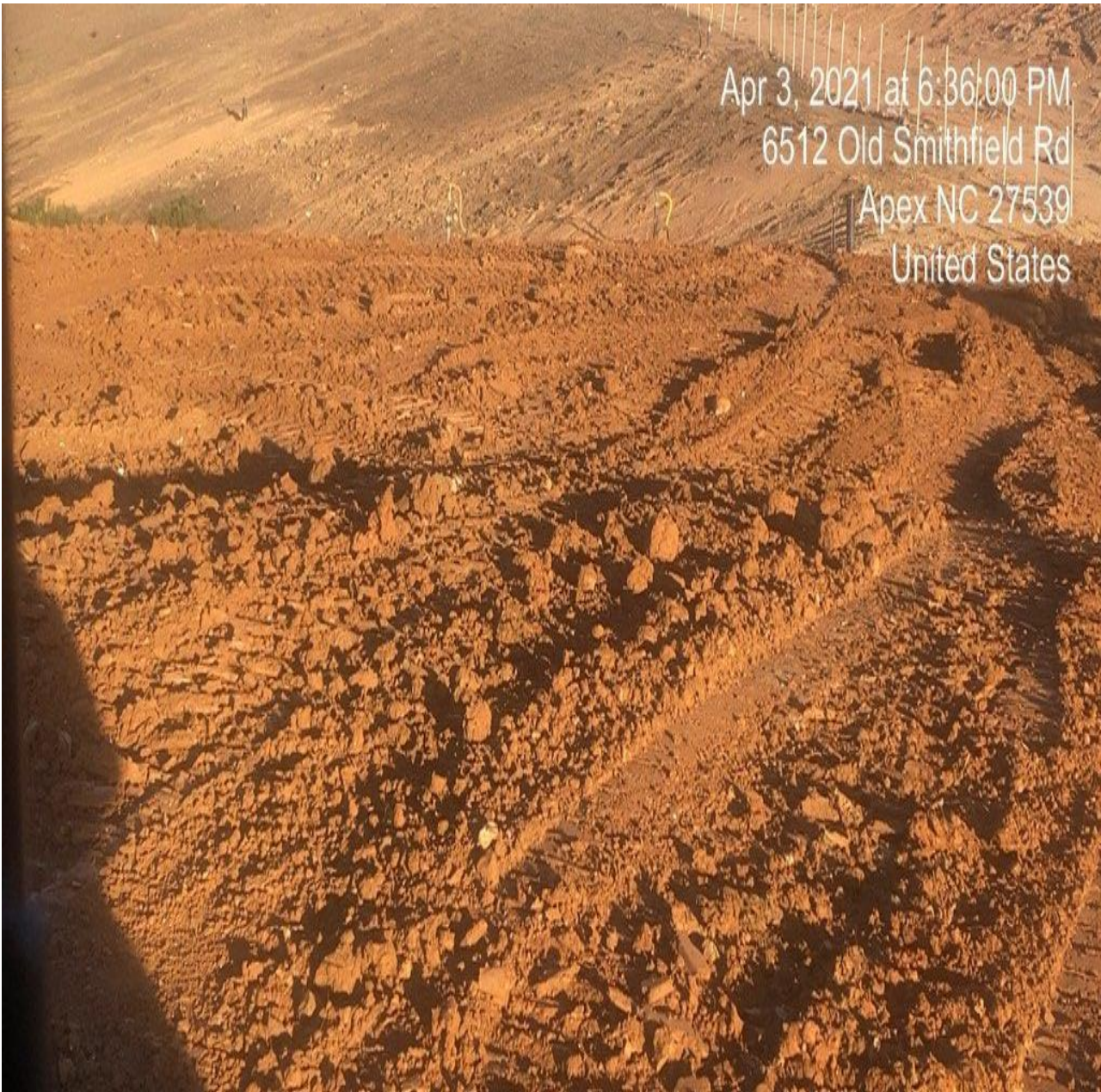




GFL - Operational Update

- GFL has continued to close the site nightly as committed since July 28th, 2020.
- Full dirt closure of the waste footprint has been achieved on the evenings before Holidays in which the landfill is closed.
- Revised operational practices are in place now and we are applying odor controlling agents directly to the roads of the site to reduce odor emissions from tire tracking.
- New NCM linear odor control misting system installed. (Photo)

Holiday Closure



Standard Closure



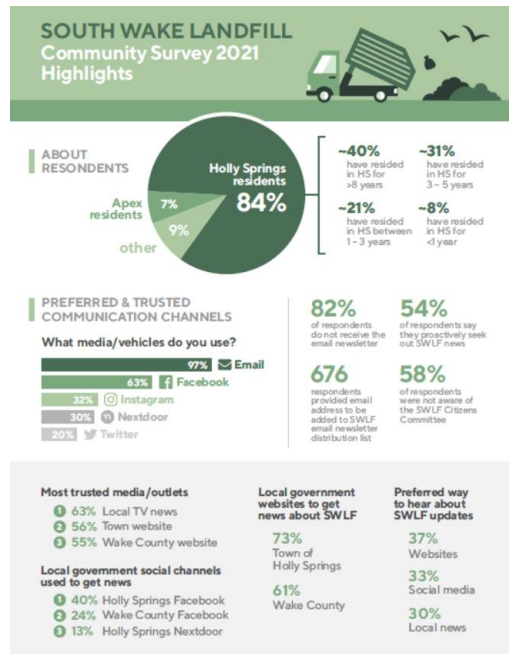
Cell Construction Project



Review of Communications Report & Next Steps

Community Engagement, Outreach, and Communication Actions

- Survey completed in mid-February
- Results provided in mid-March



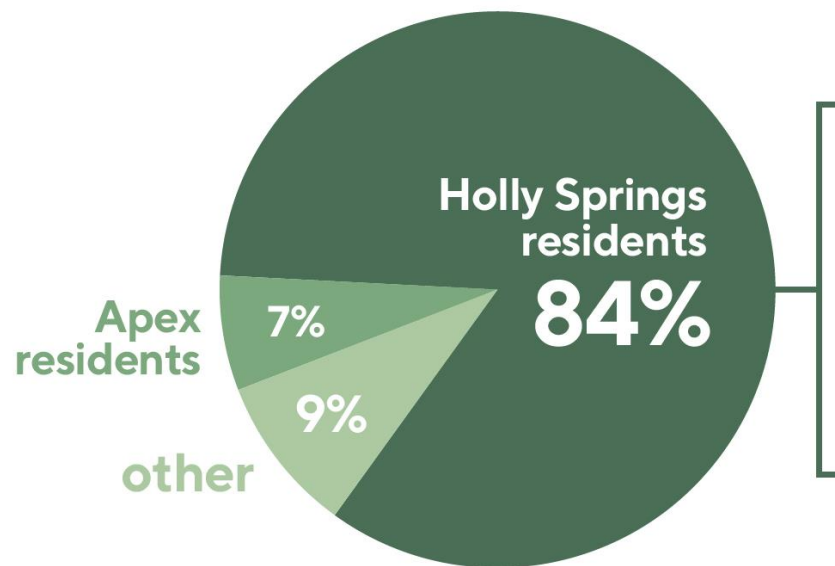
SOUTH WAKE LANDFILL

Community Survey 2021

Highlights



ABOUT RESONDENTS



~40%
have resided
in HS for
>8 years

~31%
have resided
in HS for
3 – 5 years

~21%
have resided
in HS between
1 – 3 years

~8%
have resided
in HS for
<1 year

PREFERRED & TRUSTED COMMUNICATION CHANNELS

82%
of respondents
do not receive the
email newsletter

54%
of respondents say
they proactively seek
out SWLF news

676
respondents
provided email
address to be
added to SWLF
email newsletter
distribution list

58%
of respondents
were not aware of
the SWLF Citizens
Committee

Preferred way to hear about SWLF updates

37%
Websites

33%
Social media

30%
Local news

Most trusted media/outlets

- 1 63%** Local TV news
- 2 56%** Town website
- 3 55%** Wake County website

Local government social channels used to get news

- 1 40%** Holly Springs Facebook
- 2 24%** Wake County Facebook
- 3 13%** Holly Springs Nextdoor

SOUTH WAKE LANDFILL

Community Survey 2021 Highlights



WANT TO KNOW MORE ABOUT...

75%

updates on tech to help minimize odors

59%

odor reports

29%

general info about recycling, refuse facilities

65%

landfill timeline info about current phase, next phases

29%

general operational reports

GENERAL QUESTIONS

General questions do you have about SWLF centered around these themes:

Odor and odor mitigation

Holly Springs construction

Landfill lifecycle Operations

Environmental/health concerns

Lawsuit

REPORTING ODORS

~82%

of respondents have used the form to report odors

282

respondents rated ease of use at 5 or below

521

respondents rated ease of use at 8+

How often do odors impact you?

26% > once/month

23% > once/week

20% weekly

13% a few times/year

9% never

Community Engagement, Outreach, and Communication – Next Steps

- Website updates
- Editorial calendar for ongoing press release/content for proactive communication efforts
- Review SWLF email newsletter and make recommendations for continuous improvement
- Provide recommendations to update odor report form and its email response.
- Create SWLF fact sheet/infographic, including lifespan, and high-level general talking points for odor mitigation efforts.
- Provide recommendations on how to cooperate with Town of Holly Springs on communications efforts.

Immediate Community Engagement, Outreach, and Communication Actions

- April thru June – Develop strategic communications plan
- April – May – Start Hiring process for SW Communications Specialist
- June 2021 – FT SW Communications Specialist on-board to carry out Strategic Communications Plan



Outreach & Education

Outreach & Education

Wake County Annual Compost Bin Sale



A promotional graphic for the Wake County Annual Compost Bin Sale. The top half has a dark green background with the text "COMPOST BIN SALE" in white and yellow. To the right is a circular inset showing a black "Earth Machine" compost bin and a white bucket. The bottom half has a light green background with a stylized plant icon and the text "\$50 DURING THE MONTH OF MAY". The bottom section features a dark brown soil background with the Wake County logo, "Environmental Services", and the website "WAKEGOV.COM/COMPOST".

**COMPOST
BIN SALE**

**\$50 DURING THE
MONTH OF MAY**

WAKE COUNTY
Environmental
Services

Visit our website to learn more
WAKEGOV.COM/COMPOST

- May 1 - 31, 2021
- www.wakegov.com/compost
- Backyard composting at an affordable price
- The Earth Machine compost bin, and accessories

Outreach & Education

Virtual Landfill Tours



- www.wakegov.com/landfilltours
- Live, environmental educator led
- Provide useful information on how to reduce waste



Questions and Discussion